

Wheelbase . . . . .	119.0"
Over-all Length . . . . .	209.3"
Over-all Width . . . . .	79.2"
Over-all Height . . . . .	56.8"

The 1962 Ranch Wagon is available only in the 4-door, 6-passenger model. A new-design folding rear seat provides torsion spring assist for both folding and raising and has a dual safety latch which can be released from either side of car.

The standard engine is the 138-hp Mileage Maker Six. Powerplant options include: 170-hp Thunderbird 292 V-8, 220-hp Thunderbird 352 Special V-8 (both these engines use *regular* gas), and the 300-hp Thunderbird 390 Special V-8.

Standard 3-speed manual shift transmission and optional Overdrive are available with all engines. Fordomatic Drive is offered with the standard Mileage Maker Six, 292 V-8 and 352 Special V-8. Cruise-O-Matic Drive is available with any of the above V-8's. A new 4-speed floor-mounted manual shift transmission is offered with the Thunderbird 352 and 390 Special V-8 engines.

Diamond Lustre Enamel body finishes are available in 12 Single Colors and 13 Two Tones.

**Exterior Trim**—Ranch Wagon trim includes a bright-metal belt molding which extends across the hood edge and along body sides to the rear of the car. The new anodized aluminum grille is flanked

on either side by dual headlights. A Ford crest on hood front and RANCH WAGON script on front fenders and tailgate provide identification. Other bright-metal trim includes: vent window frames, door handles, door locks, windshield molding, tailgate molding which is curved over circular taillight rims at sides, and tailgate lock and window operating handle.

**Interior Trim**—The Ranch Wagon is available with all-vinyl seat coverings in beige Steerhead-Pattern and leather-grained bolsters, or with Thong-Pattern woven plastic seat upholstery and vinyl bolsters in blue and green. Both front and rear seat cushions are foam-padded for extra comfort and neat appearance.

Color-keyed all-vinyl door panels have matching, padded vinyl-plastic front arm rests. Dual sun visors, perforated-board headlining, and plastic headlining bows are white. Garnish moldings, trim panels, wheel housings, instrument panel, steering wheel and column; front and rear floor mats and load floor are all color-keyed to exterior body colors. Standard equipment includes: cigarette lighter, front ash tray, coat hooks, lock on glove box door, and main light switch operated dome light.



## FORDOR RANCH WAGON

### STANDARD EQUIPMENT

Air cleaner, Super-Filter  
Arm rests, front  
Ash tray, front  
Battery, 12-volt, 66-plate 55 amp-hr rating  
Brakes, self-adjusting  
Bright-metal finish body trim: belt line molding across hood edge at front, along body sides to rear; dual headlights set into anodized aluminum grille; Ford crest on hood front and Ranch Wagon script on front fender sides and tailgate; door handles, door locks, windshield molding, tailgate lock and window operating handle; tailgate molding curved over circular taillight rims at sides  
Bumpers, front and rear, bright-finish, deep-section  
Chassis suspension and steering linkage lubrication, 30,000-mile interval  
Cigarette lighter, instrument panel  
Coat hooks  
Cooling system, permanent antifreeze coolant, 30,000-mile or 2-year (whichever occurs first) replacement interval  
Dome light (controlled by main light switch)  
Door checks, two-stage front, Automatic Doorman rear  
Door handles, outside, push-button  
Door latches, Double-Grip safety rotor  
Door locks, inside, front and rear push-button  
Door locks, outside, left and right  
Doorway scuff plates, aluminum  
Driveshaft, 30,000-mile lubrication interval  
Engine, Mileage Maker Six, mechanical self-adjusting valves  
Floor covering, color-keyed vinyl  
Front seat, adjustable, foam-padded cushion  
Front wheel bearings, 30,000-mile lubrication interval  
Fuel filter, 30,000-mile replacement interval element  
Glove box lock  
Headlights, dual sealed-beam  
Hub caps, stainless steel  
Instrument cluster: speedometer with odometer, fuel gauge, temperature gauge, high beam and turn signal indicators, oil pressure and generator warning lights, individual control

and ignition switch identifications  
Interior trim: blue or green woven plastic and vinyl seat upholstery, or beige all-vinyl seat coverings, both with matching seat side shields; color-keyed all-vinyl body side panels, perforated headlining with plastic roof bows, and sun visors in white; color-keyed garnish moldings, arm rests, instrument panel, steering wheel and column, floor mats, and load floor covering; bright-metal vent window frames, instrument panel molding and cluster trim, glove box lock, and tailgate skid strips  
License plate lights, rear bumper  
Load floor covering, color-keyed vinyl  
Mirror, inside, rearview, double-ball swivel  
Muffler, double-wrapped, all-aluminized  
Oil filter, Rotunda Full-Flow  
Paint, Diamond Lustre Enamel, 12 colors  
Parking brake, foot-operated  
Parking lights, recessed into bumper  
Rear axle ratio: (with manual shift transmission) 3.89 to 1 with 223-cu. in. Six and 292-cu. in. V-8, 3.56 to 1 with 352 and 390 Special V-8's  
Rear seat, folds flat into floor, foam-padded cushion  
Rear seat safety latch, right or left side release  
Seat belt anchors, built-in, front seat only  
Spare wheel and tire  
Steering wheel, deluxe 3-spoke Lifeguard with horn ring  
Sun visors, dual with center retainer clip  
Tailgate lock  
Tailgate window, manually operated roll-down  
Tires, 8.00 x 14 BSW  
Tools: bumper jack with combination jack handle, wheel wrench and hub cap pry  
Transmission, 3-speed manual shift  
Turn signals, combined with parking and stop lights  
Ventilation, Cowl-Aire, vent windows, and tailgate window  
Wheels, 14" diameter, 6" wide rims  
Windshield wipers, 15" blades, single-speed electric

### OPTIONS AND ACCESSORIES

Air conditioner, SelectAire (V-8's only) or PolarAire  
Battery, 12-volt, 66-plate 70 amp-hr rating  
Backup lights  
Brakes, Power  
Bumper guards, front only  
Clock electric, self-regulating  
Cover, interior loadspace, heavy-gauge vinyl  
Cover, luggage rack, vinyl-coated  
Door edge guards, bright-finish  
Door locks, Lifeguard Jr., inside rear  
Engines—3 V-8's (in cubic inches): 292, 352 Special and 390 Special ("390" emblems on front fenders and dual mufflers included with 390 V-8 installations)  
Fender shields, rear, body color or stainless steel  
Floor mats, individual contour, front and/or rear  
Front seat, Power  
Gas cap, locking  
Heater and defroster, MagicAire  
Heater and defroster, recirculating  
Hood ornament  
License plate frames, front and rear  
Litter disposal, plastic  
Litter disposal, vacuum (not with air-conditioned cars)  
Load floor mat, heavy-duty black rubber  
Load-adjusting shock absorbers  
Luggage rack, roof type, permanent installation  
Mirror, inside, non-glare  
Mirror, outside, rearview, 3 options  
Mirror, vanity  
Paint, Diamond Lustre Enamel, 13 Two Tones  
Parking brake warning light

Radio, push-button tuning  
Rear axle ratios: (with Overdrive) 3.89 to 1 with 223 Six and 292 V-8, 3.56 to 1 with all other V-8's; (with Fordomatic) 3.56 to 1 with 223 Six and 292 V-8, 3.00 to 1 with 352 V-8; (with Cruise-O-Matic) 3.56 to 1 with 292 V-8, 3.00 to 1 with 352 and 390 Special V-8's; (with 4-speed manual shift) 3.56 to 1 with 352 or 390 Special V-8's  
Safety package "A": padded sun visors and instrument panel  
Seat belts, front and rear  
Seat covers, clear plastic  
Seat cushions, ventilated, individual front and rear  
Seat topper pad, front and rear, full width  
Spare wheel lock cover  
Spotlight with mirror, 2 options  
Steering, Power  
Suspension, heavy-duty  
Tailgate window, power-operated  
Tinted windshield and windows/or windshield only  
Tires: 8.00 x 14 4-ply WSW  
8.00 x 14 6-ply BSW or WSW  
Tissue dispenser  
Tool kit (see Section K, page 6)  
Transmissions:  
Overdrive—with all engines  
Fordomatic—with 223 Six, 292 V-8 or 352 Special V-8  
Cruise-O-Matic—with 292 V-8, 352 or 390 Special V-8's  
4-speed Manual Shift—with 352 or 390 Special V-8's  
Wheel covers, stainless steel, 2 options  
Windows, Power  
Windshield washer, electrically operated  
Windshield wipers, 2-speed electric

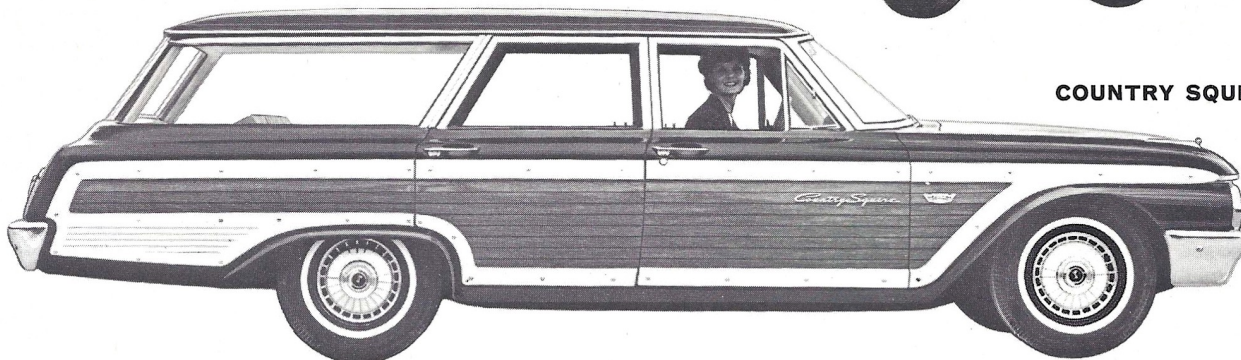


COUNTRY SEDAN

Wheelbase . . . . .	119.0"
Over-all Length . . . . .	209.3"
Over-all Width . . . . .	79.2"
Over-all Height . . . . .	56.8"



COUNTRY SQUIRE



1962 Ford Country Sedan and Country Squire 4-door wagons are offered in 6- and 9-passenger models. Six-passenger model second seats feature new-design folding action with torsion spring assist, and a dual safety latch which can be operated from either side of the car. Second seats of 9-passenger models have 1/3 and 2/3 seat back division with separate safety latches on each side. Seat back and cushion of 2nd seat fold into floor separately. Third seat back folds flat after the cushions are removed from the vehicle.

The 138-hp Mileage Maker Six engine is standard in the Country Sedan and Squire. Optional are the 170-hp Thunderbird 292 and 220-hp Thunderbird 352 Special V-8's (both use *regular* gas) plus the 300-hp Thunderbird 390 Special V-8.

Standard 3-speed manual shift transmission and optional Overdrive are available with all engines. Fordomatic Drive is offered with all engines except the 390 Special V-8, and Cruise-O-Matic Drive with any V-8 option above. A new 4-speed transmission with floor-mounted manual shift is optional with the Thunderbird 352, or 390 Special V-8's.

Country Sedan Diamond Lustre Enamel body finishes are offered in 12 Single Colors and 13 Two Tones. The Country Squire is available in 11 Single Colors but there are no Two Tones.

**Exterior Trim—Country Sedan:** The anodized aluminum grille with dual headlights at the sides is capped by molding extending across the hood front edge and along body sides. Color-coordinated background panels add extra width to side moldings as they sweep to the rear. A Ford crest mounted on the hood front and COUNTRY SEDAN script on

fender sides and tailgate provide identification. Bright-finished trim includes front fender top ornaments; door handles and locks; windshield, side window, and tailgate edge moldings; roof drip rails and rear pillars, and a tailgate panel edged with molding which curves over the circular taillights at the sides. Six-passenger models (manual tailgate window operation) have a bright-finished handle on the tailgate, while 9-passenger models (power-operated window) display a Ford crest in a circular trim ring. **Country Squire:** Similar to Country Sedan except for simulated walnut panels and limed-oak finish rails on body sides and tailgate instead of body side moldings, and vertical bar tailgate panel with molding.

**Interior Trim—Country Sedan:** Woven plastic and vinyl seat coverings are offered in blue, green, turquoise, beige, and red; all-vinyl upholstery is available in red. Both have matching seat side shields with bright-metal inserts. All-vinyl side trim panels are color-keyed and have chrome-mylar decorations. Garnish moldings, arm rests, instrument panel, steering wheel and column, front and rear floor mats, and load floor covering are all color-keyed. Vent window frames; instrument panel molding, cluster trim, glove box lock, and COUNTRY SEDAN script; rearview mirror back, and tailgate skid strips are all bright-metal finished.

**Country Squire:** Similar to Country Sedan except seat coverings are pleated cloth and vinyl in blue, turquoise, beige, and red; also pleated all-vinyl in beige, red, and blue. Front and rear floor coverings are color-keyed carpet and COUNTRY SQUIRE script is used on the glove box door.



## COUNTRY SEDAN AND SQUIRE

### STANDARD EQUIPMENT

Air cleaner, Super-Filter  
Arm rests and ash trays, front and rear  
Auxiliary (3rd) seat, flat-folding (9-passenger models only)  
Backup lights (Country Squire only)  
Battery, 12-volt, 66-plate 55 amp-hr rating  
Brakes, self-adjusting  
Bright-metal finish body trim—**Country Sedan:** Molding across hood front and along body sides to rear, dual headlights in grille, Ford crest on hood, Country Sedan script on fenders and tailgate, fender top ornaments, windshield and side window moldings, roof drip rails and rear pillars, trim panel with molding and window molding on tailgate, tailgate lock and window operating handle (manual), or Ford crest in trim ring (power window). **Country Squire:** Essentially Country Sedan trim with simulated wood panels and rails instead of rear trim panel, side and tailgate moldings. Squire script appears on front door panels and tailgate; Ford crests on front fender sides and on tailgate  
Bumpers, front and rear, bright-finish, deep-section  
Chassis suspension and steering linkage lubrication, 30,000-mile interval  
Cigarette lighter and glove box lock, instrument panel  
Clock electric, self-regulating (Country Squire only)  
Coat hooks  
Cooling system, permanent antifreeze coolant, 30,000-mile or 2-year (whichever occurs first) replacement interval  
Dome light (controlled by main light or front door switches)  
Door checks, two-stage front; Automatic Doorman rear  
Door handles, push-button  
Door latches, Double-Grip safety rotor  
Door locks, inside, front and rear push-button  
Door locks, outside, left and right  
Doorway scuff plates, aluminum  
Driveshaft, 30,000-mile lubrication interval  
Engine, Mileage Maker Six, mechanical self-adjusting valves  
Front seat, adjustable, foam-padded cushion  
Front wheel bearings, 30,000-mile lubrication interval  
Fuel filter, 30,000-mile replacement interval  
Headlights, dual sealed-beam  
Hub caps, stainless steel

Instrument cluster: speedometer with odometer, fuel gauge, temperature gauge, high beam and turn signal indicators, oil pressure and generator warning lights, individual control and ignition switch identifications  
Interior trim—**Country Sedan:** Blue, green, turquoise, beige, and red woven plastic and vinyl seats, or red all-vinyl seat coverings; sun visors and headlining in white; color-keyed all-vinyl door panels, garnish moldings, arm rests, instrument panel, steering wheel and column, floor mats and load floor covering. Bright-metal vent window frames, instrument panel molding, cluster trim, glove box lock and Country Sedan script; tailgate skid strips. **Country Squire:** Similar to Country Sedan except seat coverings are cloth and vinyl in blue, turquoise, beige, and red, or all-vinyl in beige, red, and blue. Floor carpets are color-keyed rayon-nylon and Country Squire script is used on glove box door  
License plate lights, rear bumper  
Mirror, inside, rearview, bright-metal back and bracket  
Muffler, double-wrapped, all-aluminized  
Oil filter, Rotunda Full-Flow  
Paint, Diamond Lustre Enamel, 12 colors (Sedan), 11 (Squire)  
Parking brake, foot-operated  
Parking lights, recessed into bumper  
Rear axle ratio: 3.89 to 1 with 223-cu. in. Six and 292-cu. in. V-8, 3.56 to 1 with 352 and 390 Special V-8's  
Rear seat, folding, foam-padded cushion, safety latch  
Seat belt anchors, built-in front seat only  
Spare wheel and tire  
Steering wheel, deluxe 3-spoke Lifeguard with horn ring  
Sun visors, dual with center retainer clip  
Tailgate lock  
Tailgate window, manual (6-passenger Country Sedan)  
Tires: 8.00 x 14 BSW  
Tools: bumper jack with combination jack handle, wheel wrench and hub cap pry  
Transmission, 3-speed manual shift  
Turn signals, combined with parking and stop lights  
Ventilation, Cowl-Aire, vent-windows, and tailgate window  
Wheels, 14" diameter, 6" wide rims  
Windshield wipers, 15" blades, single-speed electric

### OPTIONS AND ACCESSORIES

Air conditioner, SelectAire (V-8's only) or PolarAire  
Backup lights (Country Sedan only)  
Battery, 12-volt, 66-plate 70 amp-hr rating  
Brakes, Power  
Bumper guards, front only  
Cover, interior loadspace, heavy-gauge vinyl  
Cover, luggage rack, vinyl-coated  
Clock electric, self-regulating (Country Sedan only)  
Door locks, Lifeguard Jr., inside rear  
Engines—3 V-8's (in cubic inches): 292, 352, and 390 Special ("390" fender trim and dual mufflers included with 390 V-8  
Fender shields, rear, body color or stainless steel  
Floor mats, full width front; individual front and/or rear  
Front seat, Power  
Gas cap, locking  
Heater and defroster, MagicAire or recirculating  
Hood ornament  
License plate frames, front and rear  
Litter disposal, vacuum or plastic  
Load floor mat, heavy-duty black rubber  
Load-adjusting shock absorbers  
Luggage rack, roof type, permanent installation  
Mirror, inside, non-glare  
Mirror, outside, rearview, 3 options  
Mirror, vanity  
Paint, Diamond Lustre Enamel, 13 Two Tones (Country Sedan). None available for Squire  
Parking brake warning light  
Radio, push-button tuning

Rear axle ratios: (with Overdrive) 3.89 to 1 with 223 Six and 292 V-8, 3.56 to 1 with all other V-8's; (with Fordomatic) 3.56 to 1 with 223 Six and 292 V-8, 3.00 to 1 with 352 V-8; (with Cruise-O-Matic) 3.56 to 1 with 292 V-8, 3.00 to 1 with 352 and 390 Special V-8's; (with 4-speed manual shift) 3.56 to 1 with 352 or 390 Special V-8's  
Safety package "A": padded sun visors and instrument panel  
Seat belts, front and rear  
Seat covers, clear plastic  
Seat cushions, ventilated, individual front and rear  
Seat topper pad, front and rear, full width  
Spare wheel lock  
Spotlight with mirror, 2 options  
Steering, Power  
Suspension, heavy-duty  
Tailgate window, power-operated (Country Sedan 6-pass. only)  
Tinted windshield and windows/or windshield only  
Tires: 8.00 x 14 4-ply WSW; 8.00 x 14 6-ply BSW or WSW  
Tissue dispenser  
Tool kit (see Section K, page 6)  
Transmissions: Overdrive—with all engines: Fordomatic—with 223 Six, 292 V-8 or 352 Special V-8; Cruise-O-Matic—with 292 V-8, 352 or 390 Special V-8's; 4-speed manual shift with 352 or 390 Special V-8's  
Wheel covers, stainless steel, 2 options  
Windows, Power  
Windshield washer, electrically operated  
Windshield wipers, 2-speed electric